

For every problem, there is only one solution.

The best.



**FRITZMEIER Composite
GmbH & Co. KG**
Heimatweg 84
D-83052 Bruckmühl,
Hinrichsseggen

T: +49 8062 902 0

F: +49 8062 96 70

E: composite@fritzmeier.de

www.fritzmeier.de



**FRITZMEIER
Composite**

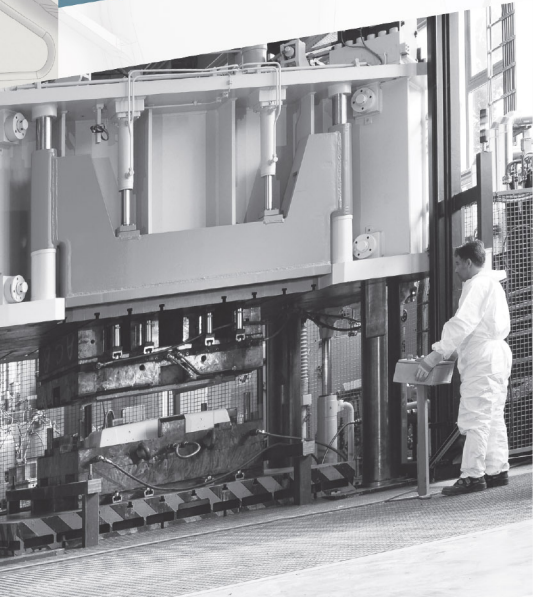
**Competence
in plastics.**

Composites made by Fritzmeier.

SMC

Sheet Molding Compound

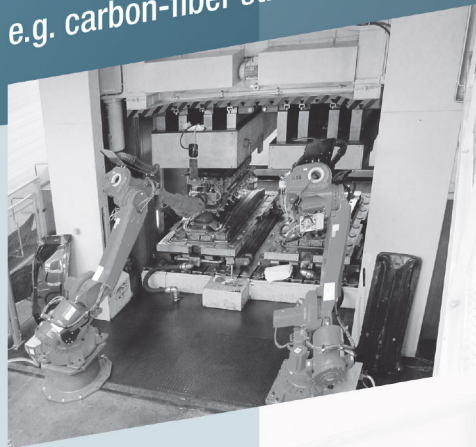
e.g. air-deflectors, front-panels, rear-lids



RTM | WPM

Resin Transfer | Wet Pressure Molding

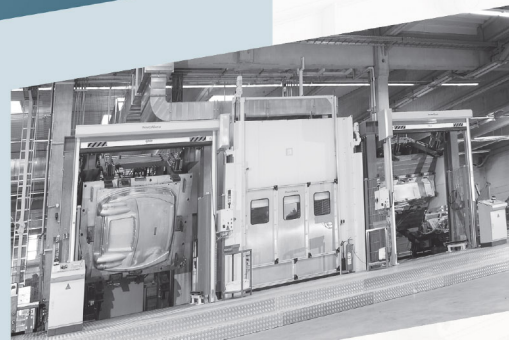
e.g. carbon-fiber structural parts



LFI

Long Fiber Injection

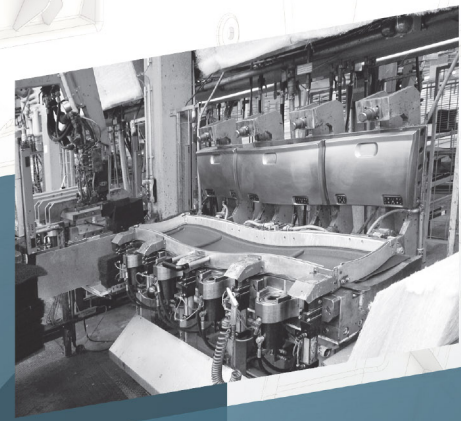
e.g. storage-boxes, roofs, hoods



SRM

Structural Reaction Molding

e.g. honeycomb-lids, interior panels, cladding-parts, dashboards, structural parts



Core technologies
The art of molding plastics



SMI

Sandwich Monocoque Injection

e.g. high-roofs, engine-hoods

